

**45 MW  
PHOTOVOLTAIC POWER  
PLANT**



**BRASOV  
ROMANIA**

***VECTOR ELECTRIC***





  
*Downtown Brasov*

**ROMANIA**

**BRASOV**

**STR. TARGULUI NR.10**

**PHONE: 0040.268.475.837**

**FAX: 0040.268.475.886**

*E-mail: [office@dinoram.ro](mailto:office@dinoram.ro)*



**VECTOR ELECTRIC**



## Information about the location

---

- North 45°81 '37 "86 '''
- East 25.17 '34 "5 '''
- Altitude: 650 m
- Area: 1.090.000 sqm



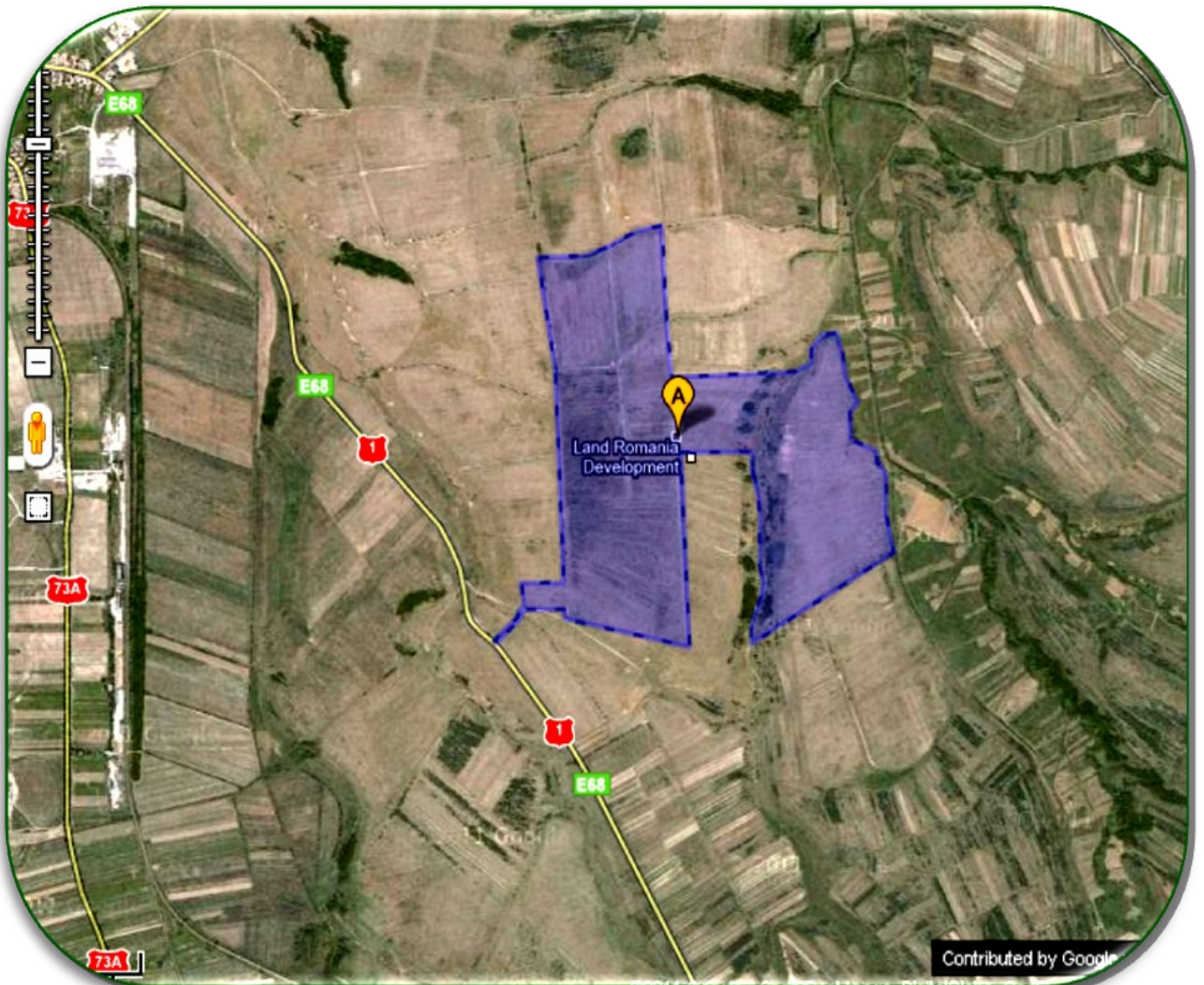
Private ownership of land is a company registered in Land Registry, as follows:  
109 hectares is in built-up area  
The land is included in PUZ (zonal urbanization plan)  
The distance to 110 kv line is 1780 m.



## Information on project characteristics

---

- Location: Parau, Brasov County
- Installation size: 45 MWp
- Location point acces: directly
- Connection point: 1780 ml (aerial power line 110)

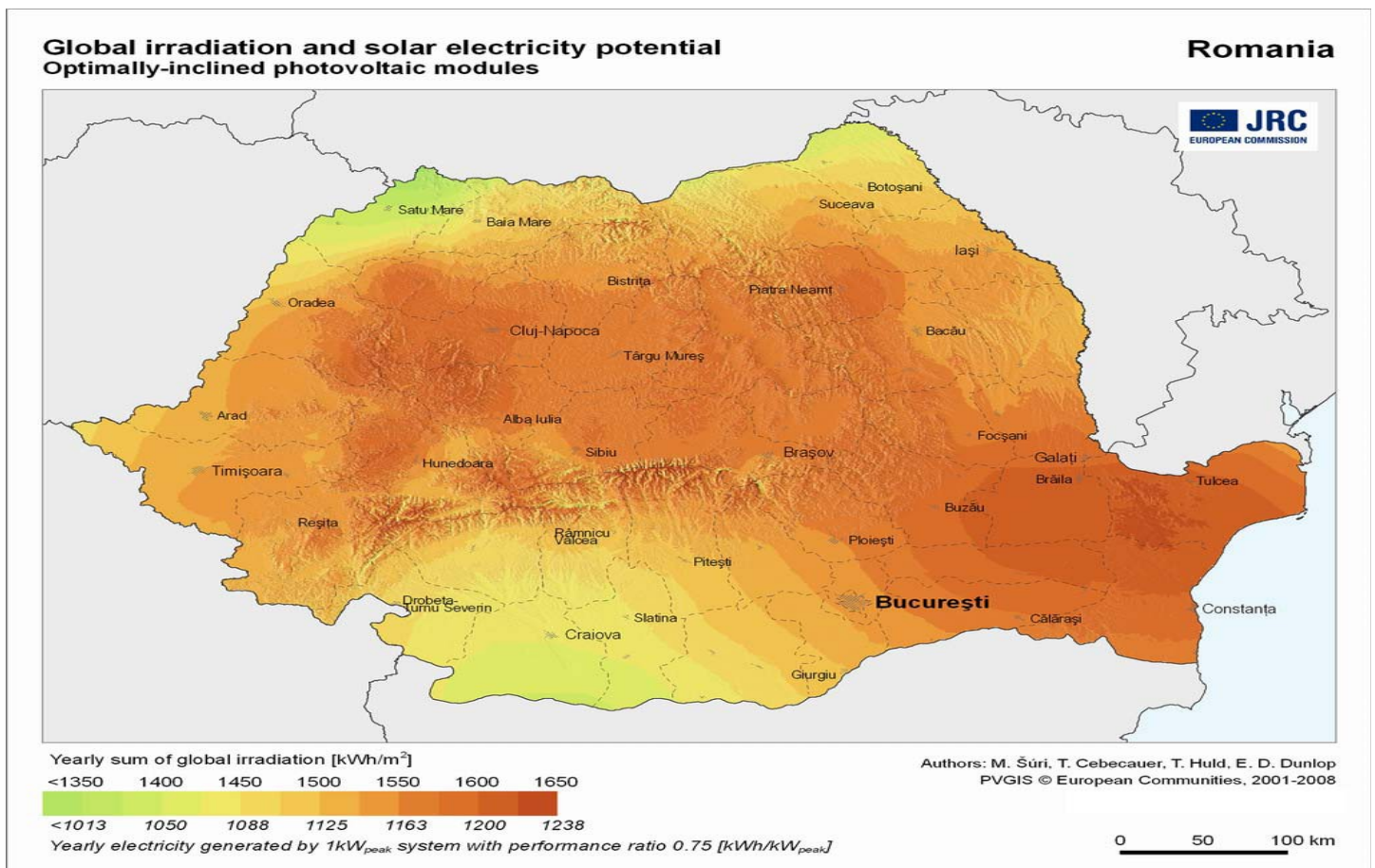




## Information about the climate in the Brasov area:

- Annual average air temperature is 7.6 Celsius degrees.
- The average number of summer days is about 50 per year.
- Average number of winter days is about 50 per year.
- Annual average humidity is 75%.
- Rainfall values were 600-700 mm / year.
- Prevailing wind direction at the ground is from west and north-west,
  - having an average speeds between 1.5 and 3.2 m/s.

**Information about the location in terms of solar radiation:** *Brasov has a value of solar radiation of about 1550-1600 kWh / sq m and a yield about 1250-1300 kWh / kWp*





*VECTOR ELECTRIC*

## **OFFER FOR SALE**

---

*WE OFFER FOR SALE THE ENTIRE PARK, WITH LAND AND ALL NOTICES, CERTIFICATIONS AND APPROVALS NECESSARY TO BEGIN AND END WORK, AS FOLLOWS:*

- *109 ha land*
- *Building permit*
- *Grid permit between the park and LEA 110*
- *Building permit for connection line*

*ALL THESE WILL BE INCLUDED IN THE SALE OF SHARES*





# ADDITIONAL OFFER FOR CONSULTING AND MANAGEMENT

---

**After the actual construction of the plant, the following steps are required:**

- Signing connection contract with Electrica and connection fee, written in ATR
- Execution of electrical connection of the plant (entrepreneur)
- 3 months before the completion of the investment , license is required for setting up production unit at ANRE
- After the technological testing and commissioning, producer license (valid 25 years) is requested from ANRE
- With the license, the unit of production is included in the list of RES-E producers
- Steps to OPCOM for trading green certificates
- Operating and programming of the system power supplies

***If desired our team to continue performing these activities, this collaboration can be based on a consulting and management contract.***

